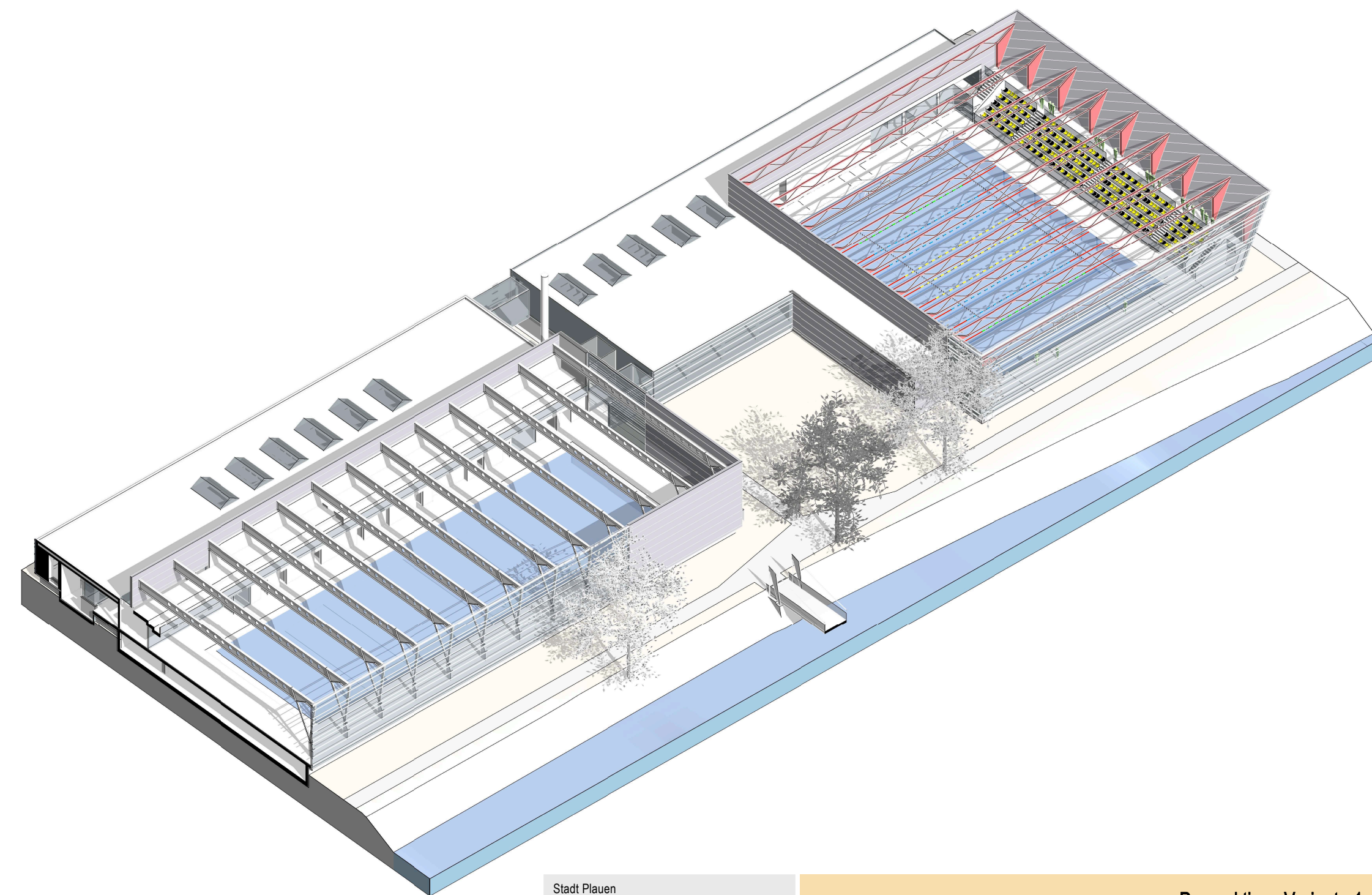
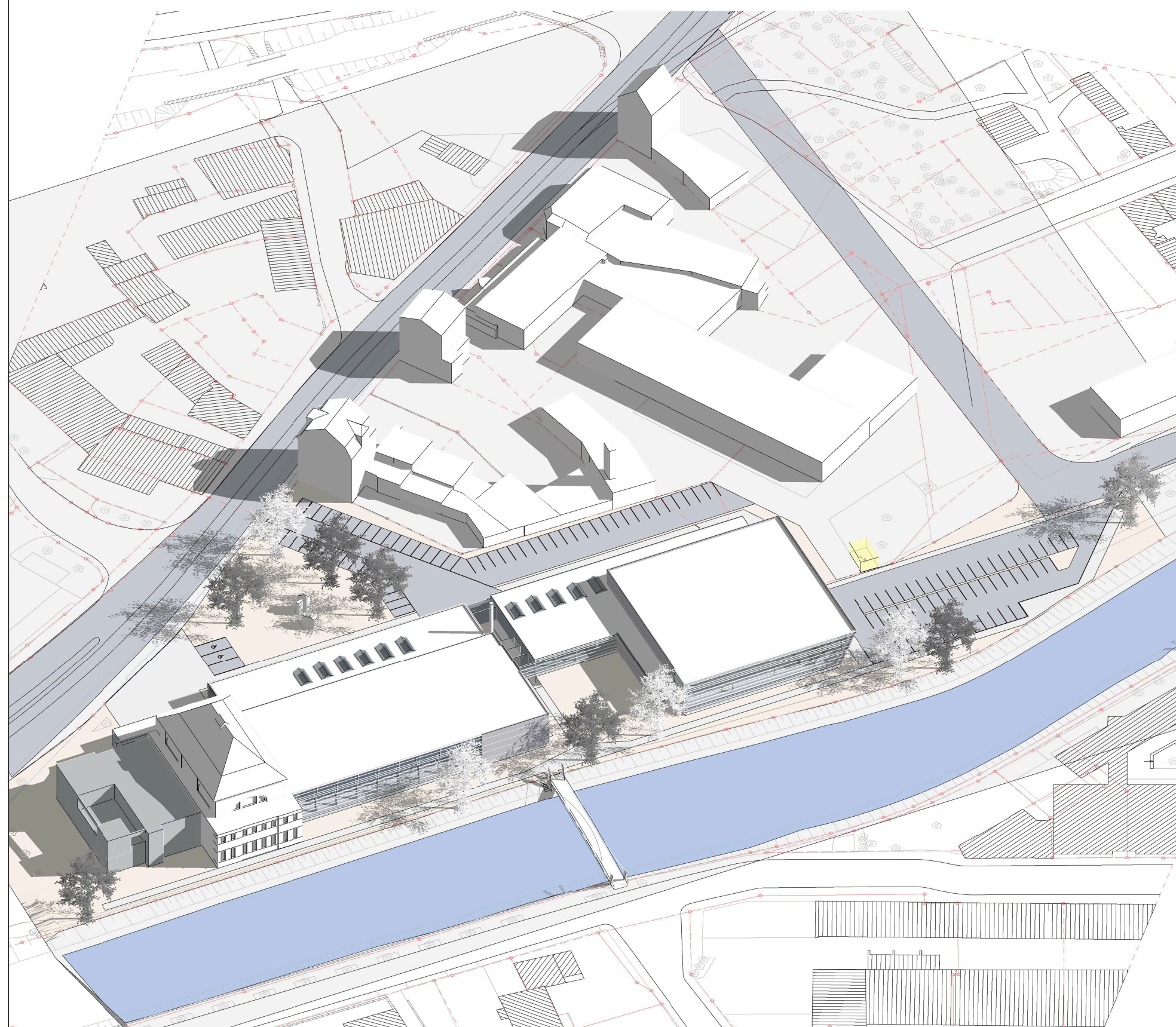
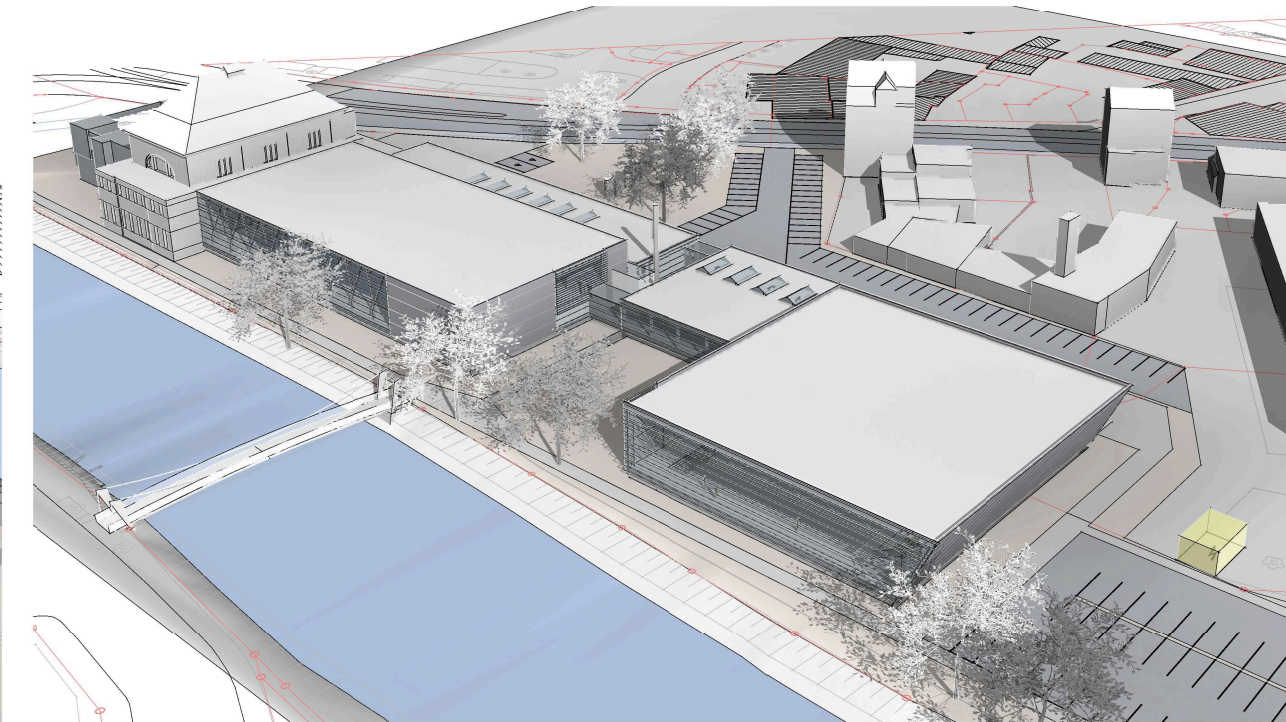
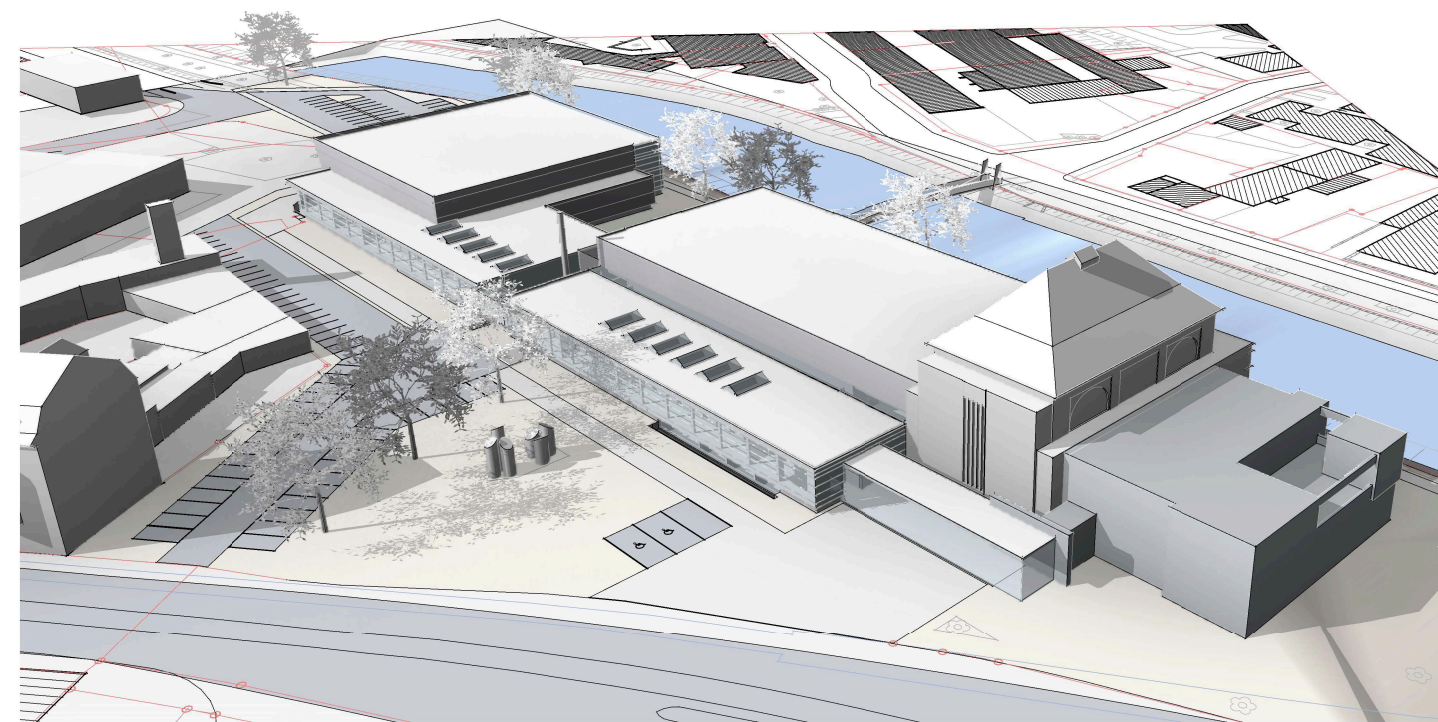
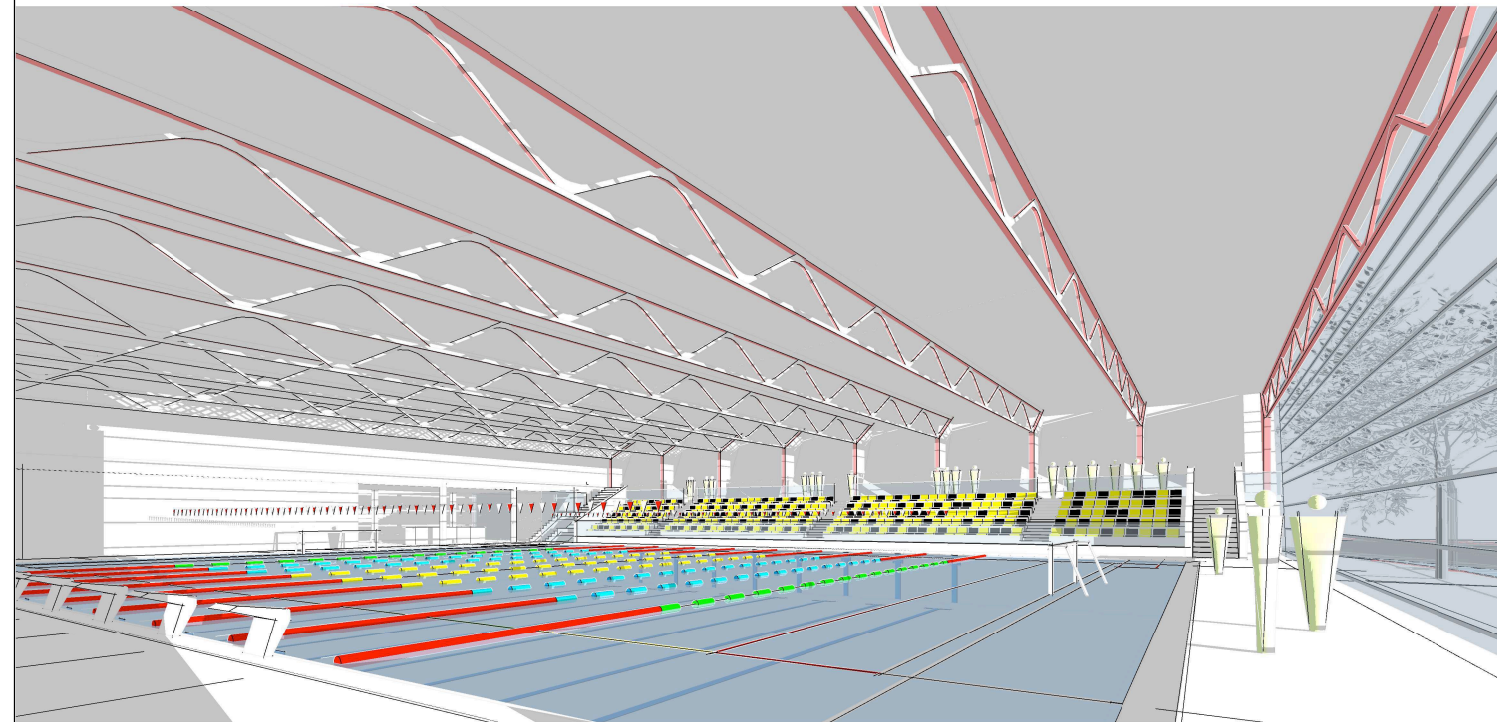
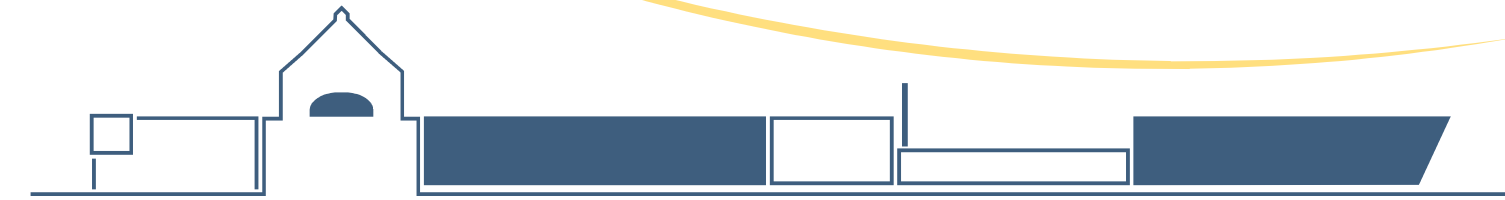


Perspektiven



Stadt Plauen
Gebäude- u. Anlagenverwaltung
Reichenbacher Str. 34, 08527 Plauen

Architekturlux
Fasanenring 108 08525 Plauen
03741 5765322 lux@architekturlux.de

Perspektiven Variante 1

Studie zur Erweiterung des Stadtbades Plauen

±0.00 = 334,93 m

19_11

190800

Blatt 07