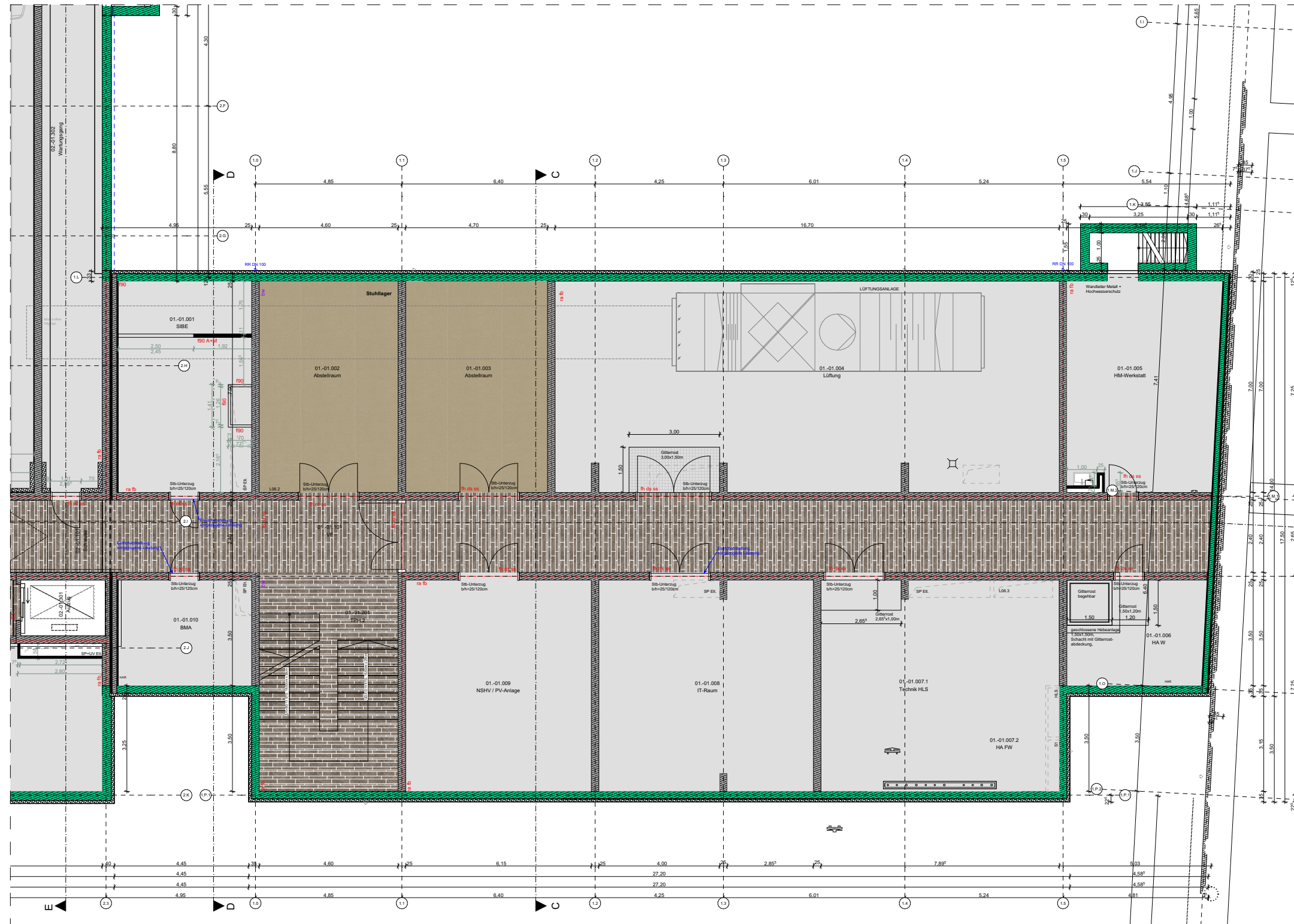
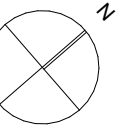
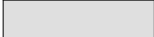

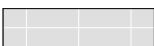


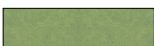


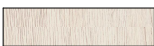


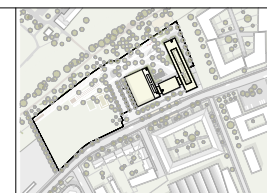
[illegible]

### Legende Bodenbeläge

- |  |  |
|--|--|
|   | Epoxidharzbeschichtung   |
|   | Feinsteinzeug Natursteinoptik<br>5/10/15x60cm, taupe, R10-R10B |
|   | Feinsteinzeug Küchenbereich<br>30x30cm, grau, R11              |
|   | Feinsteinzeug Küchenbereich<br>30x30cm, grau, R12 V4           |
|   | Linoleum hellblau,<br>NCS S3020-B10G                           |
|   | Linoleum hellgrün,<br>NCS S3030-G40Y                           |
|   | Linoleum graugrün,<br>NCS S4010-G30Y                           |
|   | Linoleum graubraun,<br>NCS S3010-Y20R                          |
|  | Hochkantlamellenparkett<br>Eiche hell                          |

4440-Neubau BSZ Wirtschaft  
"Franz Ludwig Gehe"

Freiberger Straße 30  
01159 Dresden



Ausschreibungsunterlagen			
Plan	Grundriss Untergeschoss Bauteil 1b Schule, Bodenbeläge	Maßstab ohne	Datum 06.12.2024
Dateiname	LV028-01-4440_001_5_A_BBP_100007		Projektleiter HL-4051335