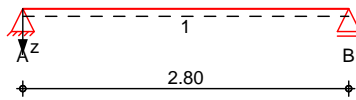


Pos. SZ1

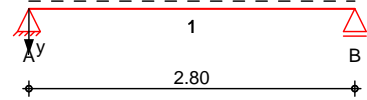
verhindern.

System
 M 1:65

System z-Richtung



System y-Richtung



Abmessungen
 Mat./Querschnitt

Feld	l [m]	Material	b/h [cm]
1	2.80	C 25/30	100.0/30.0

Expositionsklassen

XC4 und XF1

Auflager

Lager	x [m]	b [cm]	Art	$K_{T,z}$ [kN/m]	$K_{T,y}$ [kN/m]	Gabell.
A	0.00	30.0	weich	fest	fest	fest
B	2.80	30.0	weich	fest	fest	fest

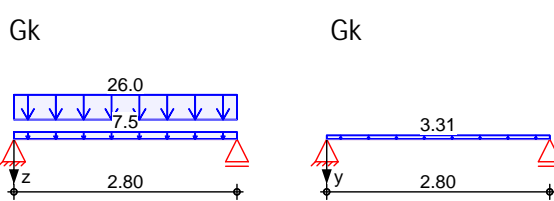
Belastungen

Belastungen auf das System

Graphik

Belastungsgrafiken (einwirkungsbezogen)

Einwirkungen



Streckenlasten
 in z-Richtung

Gleichlasten

Einw. G_k

Feld	Komm.	a [m]	s [m]	q_{li} [kN/m]	q_{re} [kN/m]	e [cm]
1	Eigengew	0.00	2.80		7.50	0.0
(a) 1		0.00	2.80		26.00	0.0

(a) Auflast aus Gabionenwand ca.
2.0x1.0 m
 $2.0 \cdot 1.0 \cdot 13 = 26.00 \text{ kN/m}$

Streckenlasten
in y-Richtung

Feld	Komm.	a [m]	s [m]	q _{li} [kN/m]	q _{re} [kN/m]	e [cm]
(a) 1		0.00	2.80		3.31	-15.0

(a) infolge Erddruck auf aufstehende
Gabionenwand
 $5.3 \cdot 1.25 / 2 = 3.31 \text{ kN/m}$

Kombinationen Kombinationsbildung nach DIN EN 1990

Ek	(* *EW)
1	1.35 * Gk
2	1.00 * Gk

Bemessung (GZT)

" o M

Tabelle Schnittgr en (Umh llende)

x [m]	M _{y,d,min}	Ek	V _{z,d,min}	Ek
	M _{y,d,max} [kNm]	Ek	V _{z,d,max} [kN]	Ek
Feld 1	0.00	2	46.90	2
		1	63.31	1
0.10	4.52	2	43.55	2
	6.11	1	58.79	1
1.40	32.83	2	0.00	2
	44.32	1	0.00	1
2.70	4.52	2	-58.79	1
	6.11	1	-43.55	2
2.80	0.00	2	-63.31	1
	0.00	1	-46.90	2

Tabelle Schnittgr en (Umh llende)

x [m]	M _{z,d,min}	Ek	V _{y,d,min}	Ek	M _{w,d,min}	Ek
	M _{z,d,max} [kNm]	Ek	V _{y,d,max} [kN]	Ek	M _{w,d,max} [kNm]	Ek
Feld 1	0.00	1	4.64	2	0.70	2
		2	6.26	1	0.94	1
0.10	-0.60	1	4.31	2	0.65	2
	-0.45	2	5.81	1	0.87	1
1.40	-4.38	1	0.00	2	0.00	2
	-3.25	2	0.00	1	0.00	1
2.70	-0.60	1	-5.81	1	-0.87	1
	-0.45	2	-4.31	2	-0.65	2
2.80	0.00	1	-6.26	1	-0.94	1

x [m]	M _{z,d,min} [kNm]	Ek	V _{y,d,min} [kN]	Ek	M _{w,d,min} [kNm]	Ek
	M _{z,d,max} [kNm]	Ek	V _{y,d,max} [kN]	Ek	M _{w,d,max} [kNm]	Ek
	0.00	2	-4.64	2	-0.70	2

Biegung
6.1

(unsymmetrisch je Seite)

x [m]	N _{xd} [kN]	M _{yd} [kNm]	M _{zd} [kNm]	T _{Ed} [kNm]	A _{s,o}	A _{s,o,T}	A _{s,o}
					A _{s,u}	A _{s,u,T}	A _{s,u}
					A _{s,l}	A _{s,l,T}	A _{s,l}
					A _{s,r}	A _{s,r,T}	A _{s,r}
<i>(L = 2.80 m, b/h = 100.0 / 30.0 cm)</i>							
0.00	0.0	0.0	0.0	0.9	0.00	0.10	0.10
	0.0	0.0	0.0	0.9	0.00	0.10	0.10
	0.0	0.0	0.0	0.9	0.00	0.10	0.10
	0.0	0.0	0.0	0.9	0.00	0.10	0.10
0.10	a	0.0	6.1	-0.6	0.9	0.00	0.10
		0.0	6.1	-0.6	0.9	0.44	3.55 ^M
		0.0	6.1	-0.6	0.9	0.10	3.06 ^M
		0.0	6.1	-0.6	0.9	0.09	0.18
1.40	*	0.0	44.3	-4.4	0.0	0.80	0.80
		0.0	44.3	-4.4	0.0	3.44	3.55 ^M
		0.0	44.3	-4.4	0.0	0.56	3.06 ^M
		0.0	44.3	-4.4	0.0	0.40	0.40
2.70	a	0.0	6.1	-0.6	-0.9	0.00	0.10
		0.0	6.1	-0.6	-0.9	0.44	3.55 ^M
		0.0	6.1	-0.6	-0.9	0.10	3.06 ^M
		0.0	6.1	-0.6	-0.9	0.09	0.18
2.80		0.0	0.0	0.0	-0.9	0.00	0.10
		0.0	0.0	0.0	-0.9	0.00	0.10
		0.0	0.0	0.0	-0.9	0.00	0.10
		0.0	0.0	0.0	-0.9	0.00	0.10

Querkraft
6.2

x [m]	V _{Ed,z} [kN]	T _{Ed} [kNm]	erf a _{sw,z}	erf a _{sw,T}	a _{sw}
			erf a _{sw,y}		
<i>(L = 2.80 m, b/h = 100.0 / 30.0 cm)</i>					
0.00	63.3	0.9	8.32 ^M	0.02	10.86 ^M
	6.3		2.50 ^M		
0.10	a	58.8	0.9	8.32 ^M	10.86 ^M
		5.8		2.50 ^M	
2.70	a	-58.8	-0.9	8.32 ^M	10.86 ^M
		-5.8		2.50 ^M	
2.80		-63.3	-0.9	8.32 ^M	10.86 ^M
		-6.3		2.50 ^M	

Nachweise (GZT)

8 u) @ - V

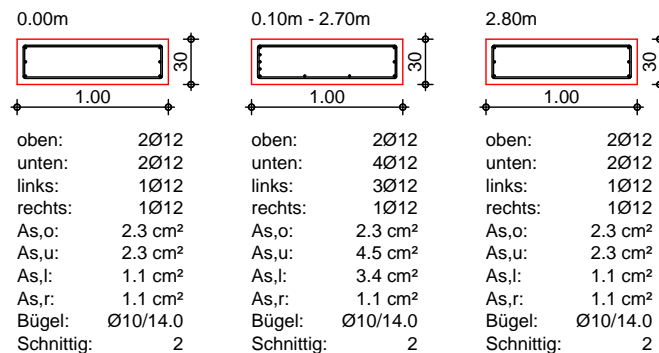
Druckstreben
6.3.2

x	$V_{Ed,z}$ $V_{Ed,y}$ [kN]	T_{Ed} [kNm]	z y	$V_{Rd,max,z}$ $V_{Rd,max,y}$ [kN]	$T_{Ed,max}$ [kNm]	[-]
<i>(L = 2.80 m, b/h = 100.0 / 30.0 cm)</i>						
0.00	63.3	0.9	18.4	554.6	83.4	0.13
	6.3		18.4	835.8	83.4	
0.10	58.8	0.9	18.4	554.6	83.4	0.12
	5.8		18.4	835.8	83.4	
2.70	58.8	0.9	18.4	554.6	83.4	0.12
	5.8		18.4	835.8	83.4	
2.80	63.3	0.9	18.4	554.6	83.4	0.13
	6.3		18.4	835.8	83.4	

Bewehrungswahl

x	Anz.	$d_{s,L}$ [mm]	$A_{s,o}$ $A_{s,u}$ $A_{s,l}$ $A_{s,r}$	$d_{s,B}$ [mm]	s [cm]	n	a_{sw}
<i>(L = 2.80 m, b/h = 100.0 / 30.0 cm)</i>							
0.00	2	e	2.26	e	14	2	11.22
	2	e	2.26				
	1	e	1.13				
	1	e	1.13				
0.10	2	e	2.26	e	14	2	11.22
	4	e	4.52				
	3	e	3.39				
	1	e	1.13				
2.80	2	e	2.26	e	14	2	11.22
	2	e	2.26				
	1	e	1.13				
	1	e	1.13				

Feld 1
M 1:50



..

Char. Auflagerkr.