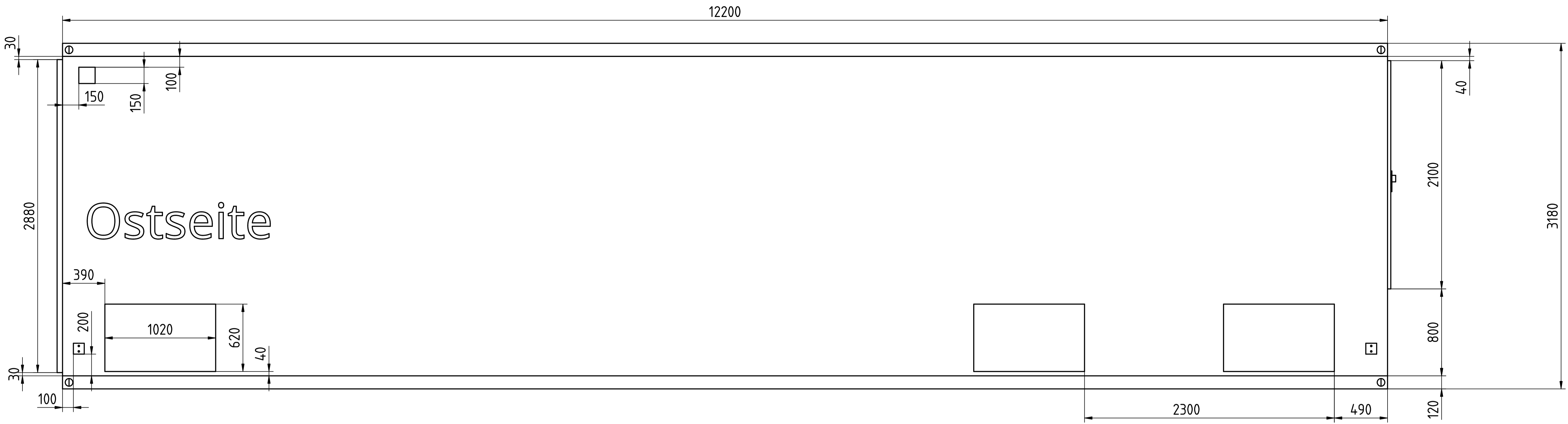
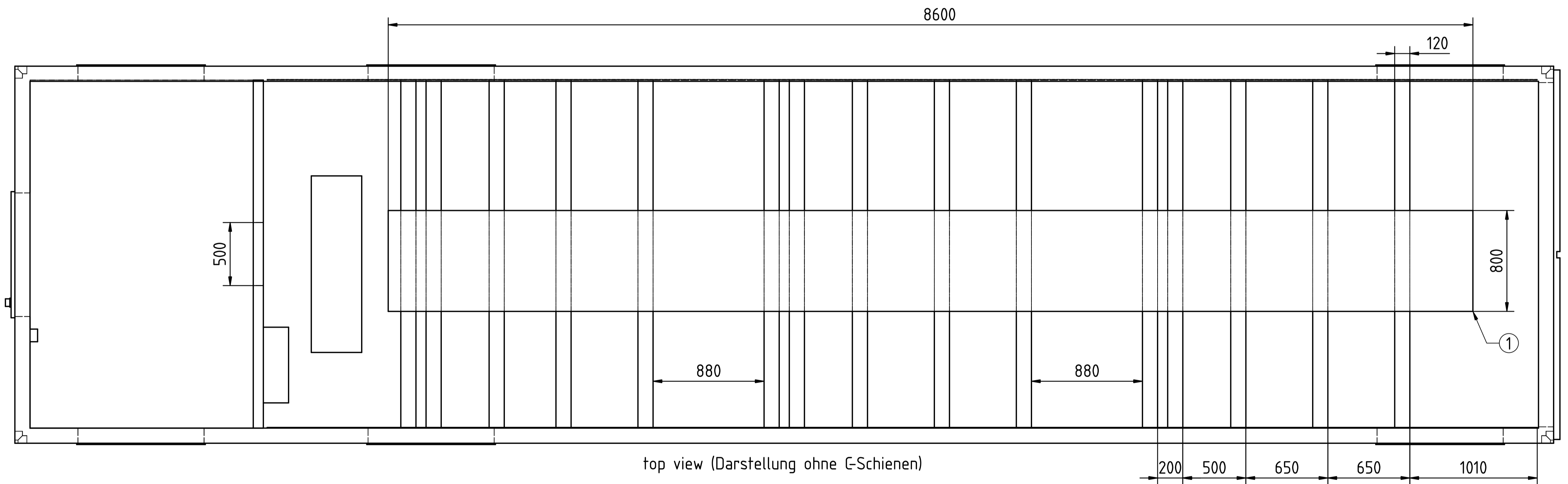
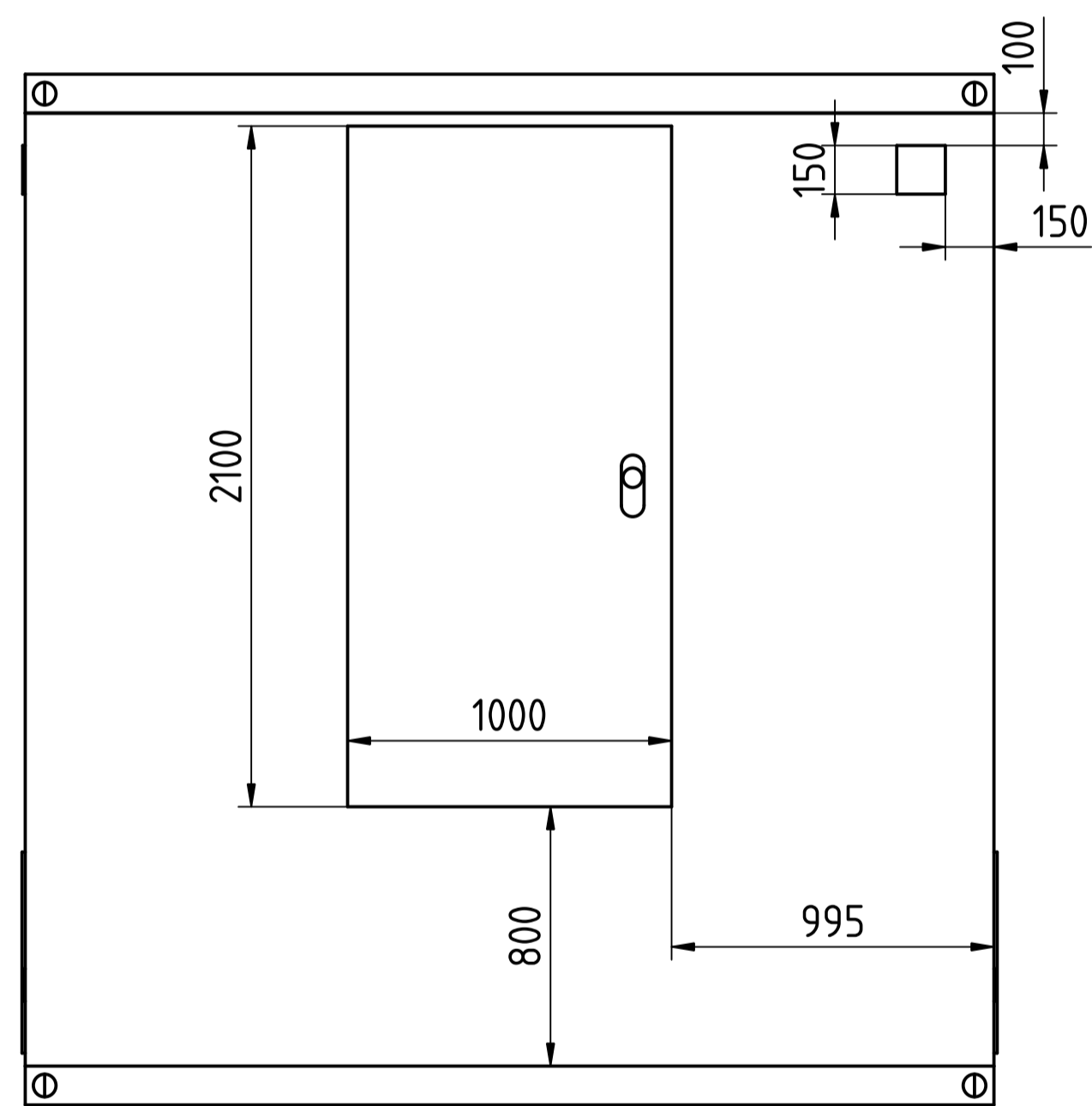
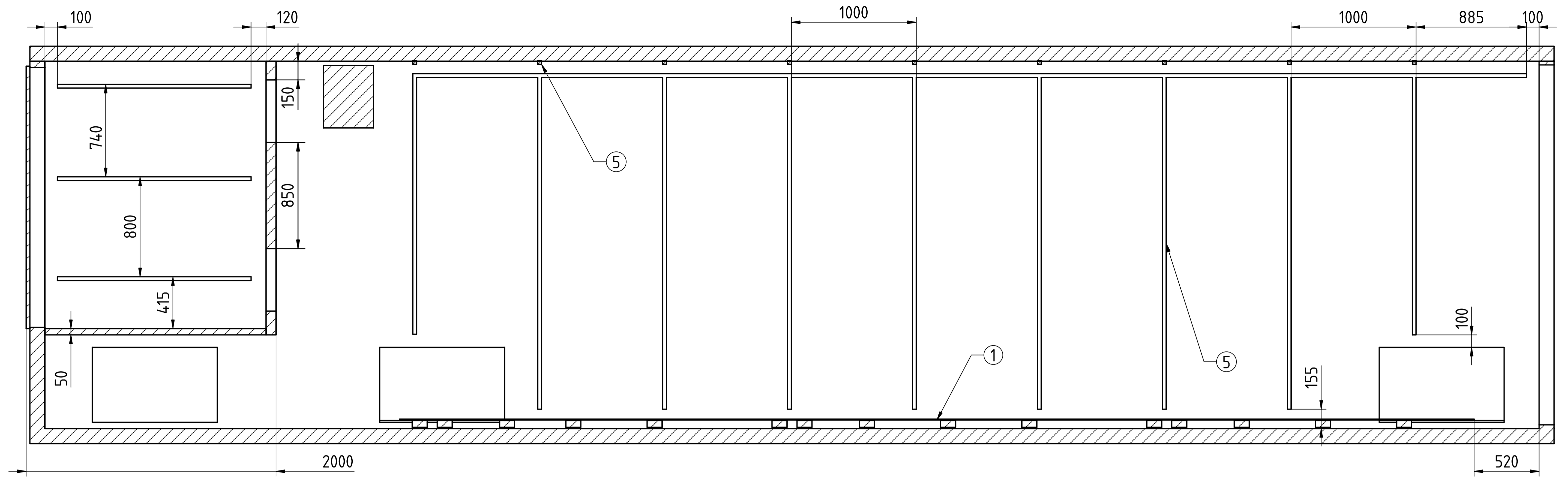
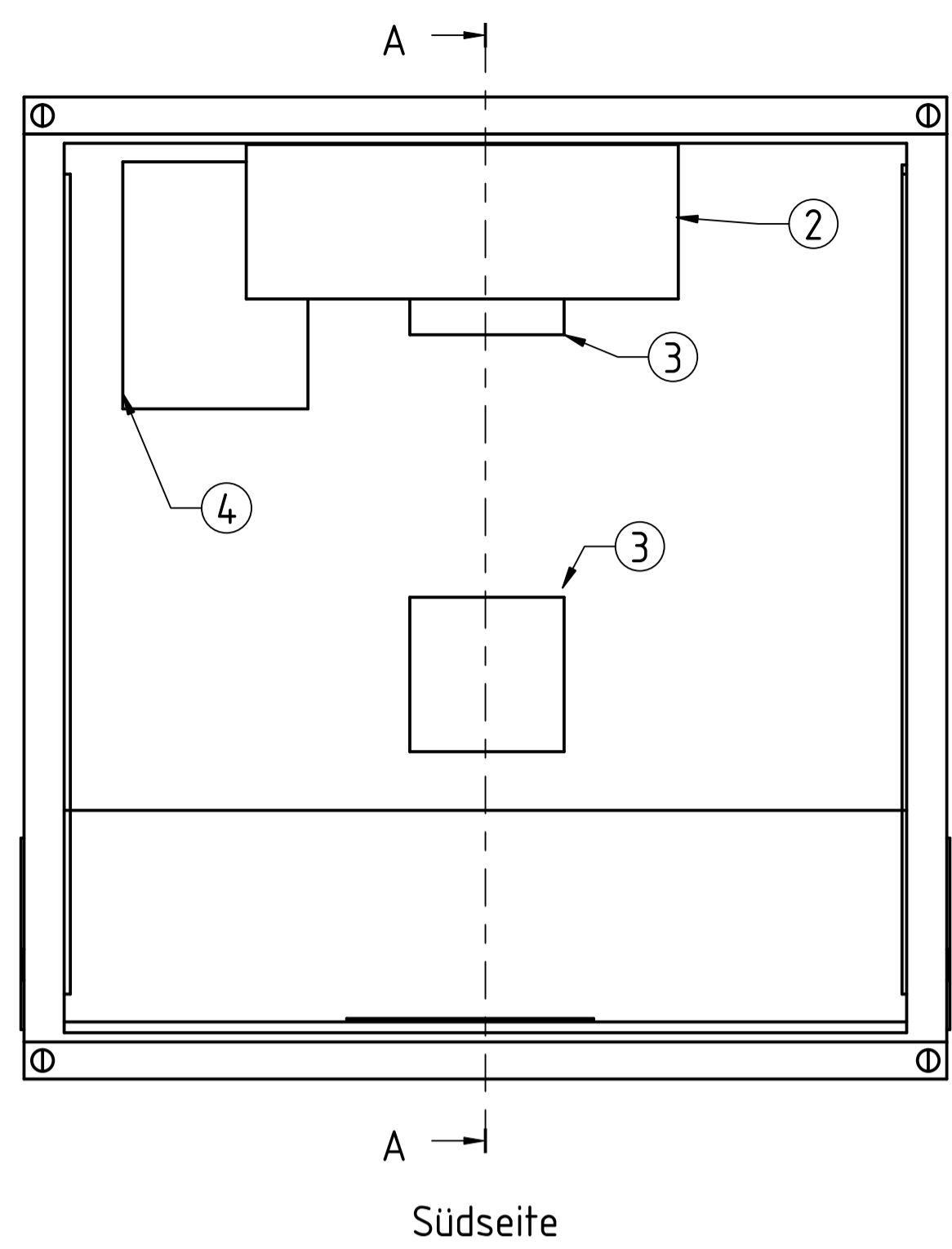


Created by: fz	Title: Container C3 - MMC		
Supplementary information: DC-Lab Saxony Hochschule Zittau/Görlitz + TU Dresden	Size: A1	Sheet: 1 / 4	Scale: 1:20
	Part number:		
	Drawing number:		
	Date: 11.02.2025	Revision: REV A	

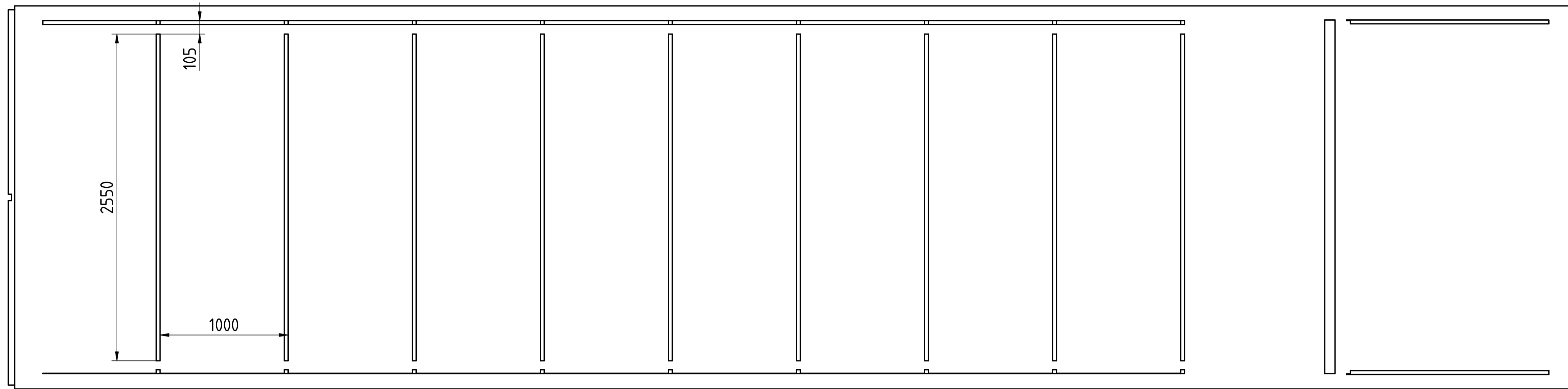


Created by: fz	Title: Container C3 - MMC		
Supplementary information: DC-Lab Saxony Hochschule Zittau/Görlitz + TU Dresden	Size: A1	Sheet: 2 / 4	Scale: 1:20
Part number:			
Drawing number:			
Date: 12.02.2025	Revision: REV A		



- 1: Leiterboden mit Tränenblech-Laufsteg
- 2: Klimaanlage
- 3: Lüfterdurchbrüche
- 4: E-Verteiler
- 5: G-Schienen

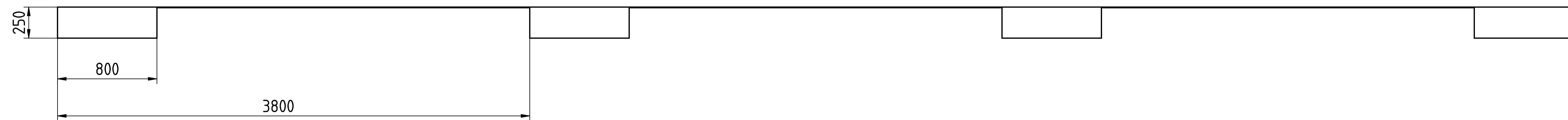
Created by: fz	Title: Container C3 - MMC		
Supplementary information: DC-Lab Saxony Hochschule Zittau/Görlitz + TU Dresden	Size: A1	Sheet: 3 / 4	Scale: 1:20
Part number:			
Drawing number:			
Date: 10.02.2025	Revision: REV A		



Dach von unten



Fundamentplan



Created by: fz	Title: Container C3 - MMC		
Supplementary information: DC-Lab Saxony Hochschule Zittau/Görlitz + TU Dresden	Size: A1	Sheet: 4 / 4	Scale: 1:20
Part number:			
Drawing number:			
Date: 12.02.2025	Revision: REV A		