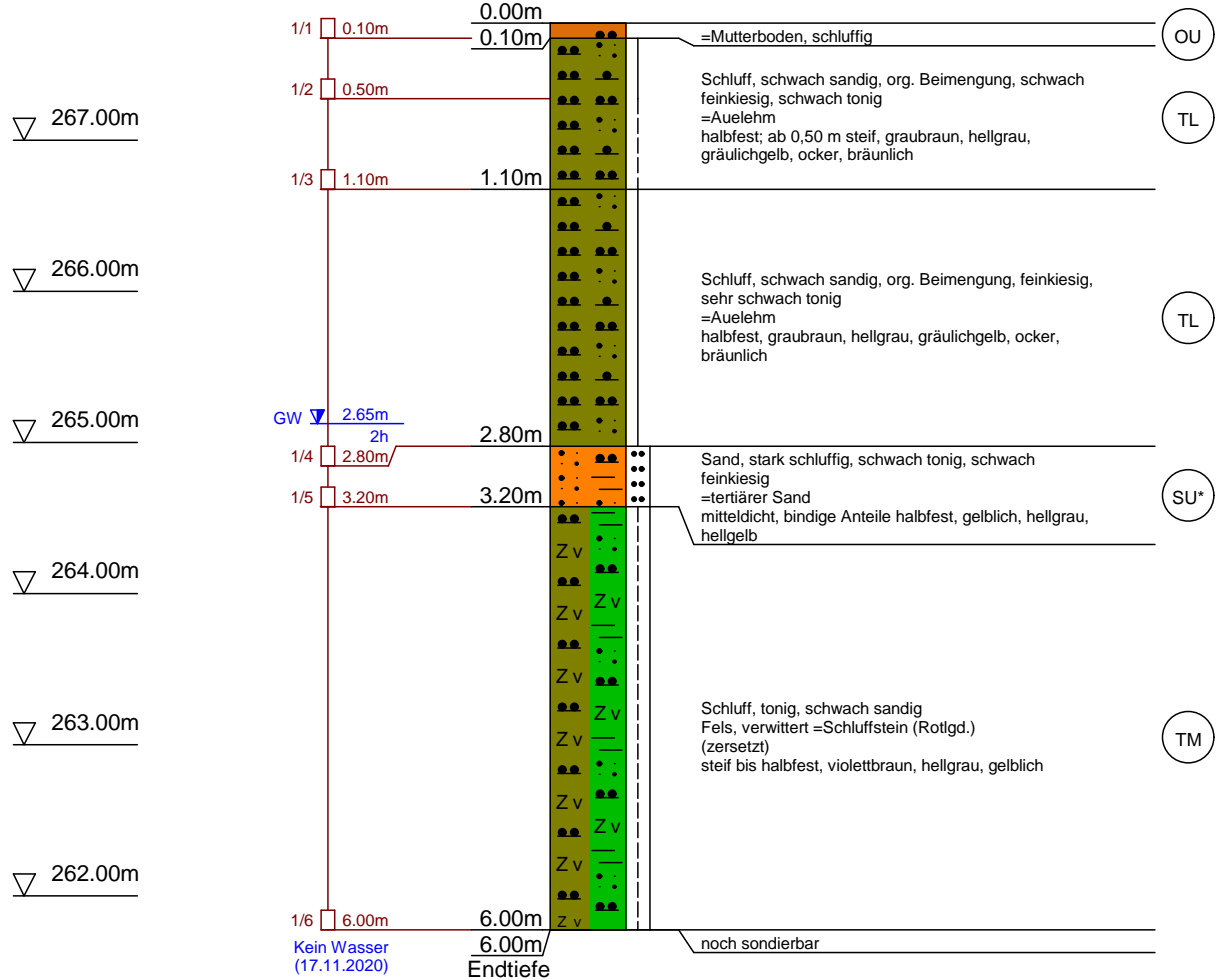


33321005.390

5634413.327

RKS 1

267.774 m DHHN 92



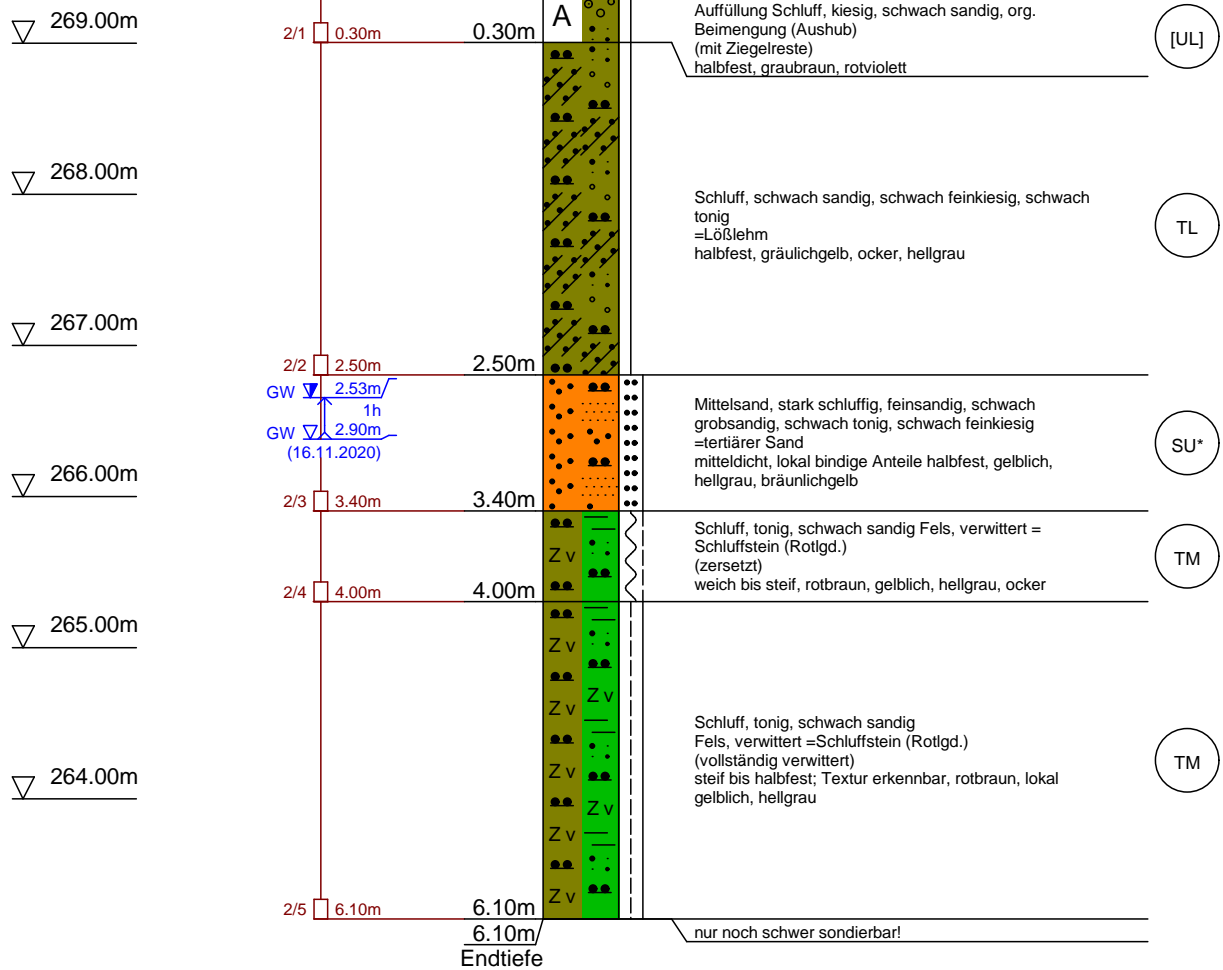
33321011.661

5634393.183

RKS 2

269.306 m DHHN 92

0.00m

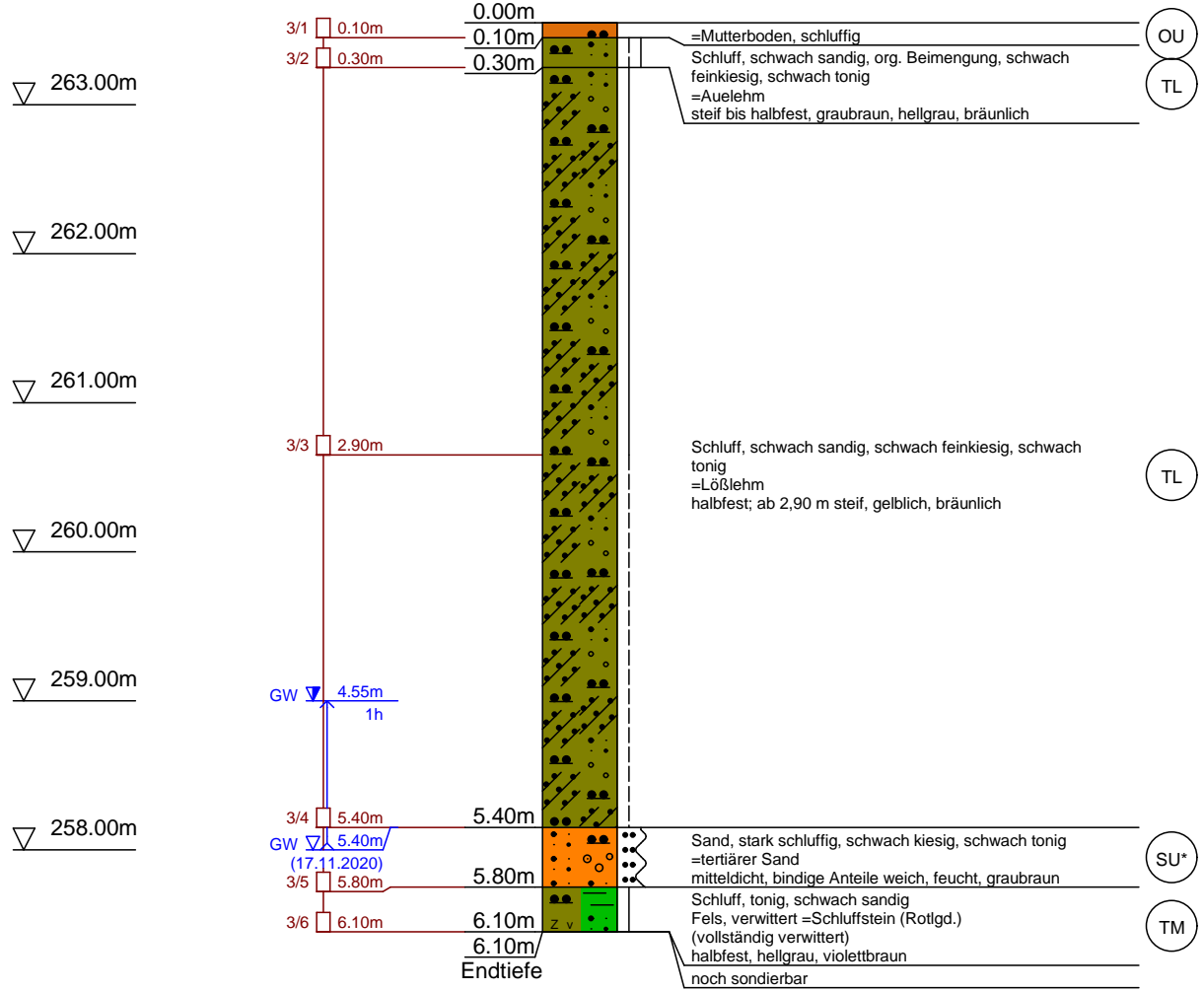


33321144.867

5634473.628

RKS 3

263.551 m DHHN 92



33321155.404

5634441.684

RKS 4

266.259 m DHHN 92

0.00m

▽ 266.00m

4/1

0.35m

0.35m

M u

=Mutterboden, schluffig

OU

▽ 265.00m

▽ 264.00m

▽ 263.00m

4/2

3.20m

Schluff, schwach sandig, schwach feinkiesig, schwach tonig
=Lößlehm
steif bis halbfest; ab 3,20 m weich, gelblichbraun

TL

▽ 262.00m

▽ 261.00m

4/3

6.00m

6.00m

4/4

6.10m

6.10m

Endtiefe

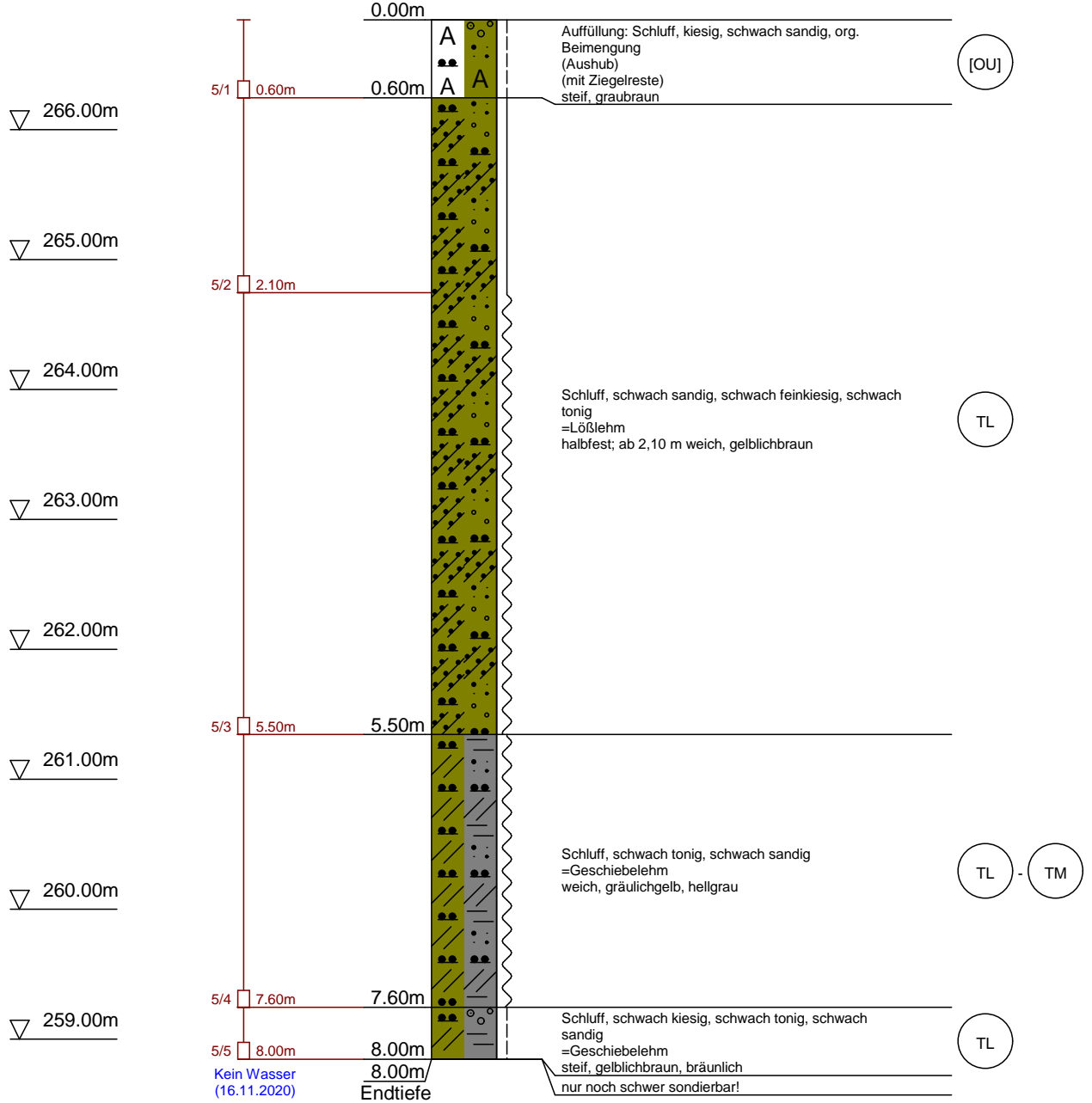
Kein Wasser
(16.11.2020)

Sand, schluffig, schwach kiesig
=tertiärer Sand
mitteldicht, gelblich, bräunlichgrau
noch sondierbar

SU*

RKS 5

266.843 m DHHN 92



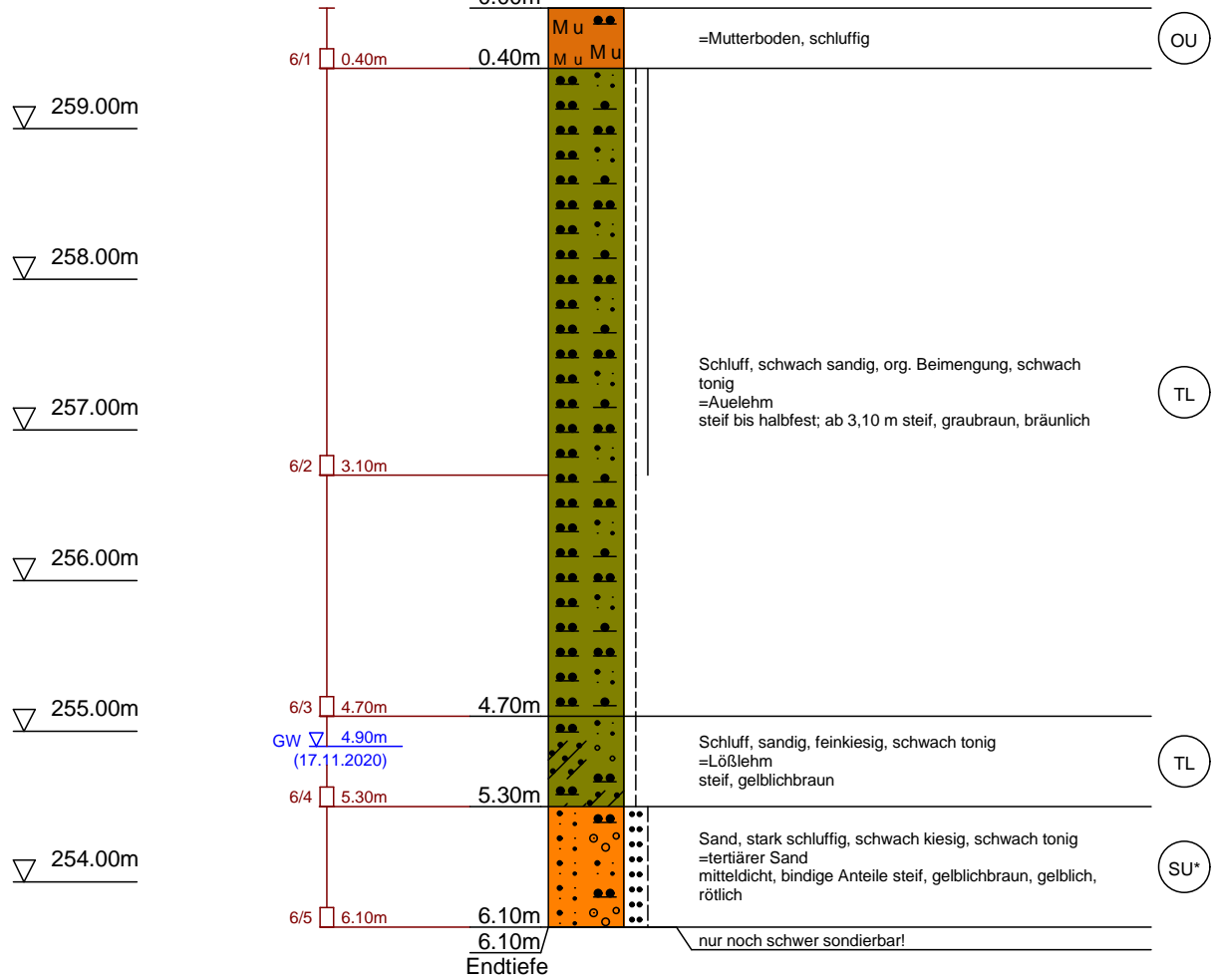
33321279.617

5634522.063

RKS 6

259.799 m DHHN 92

0.00m



Endtiefe

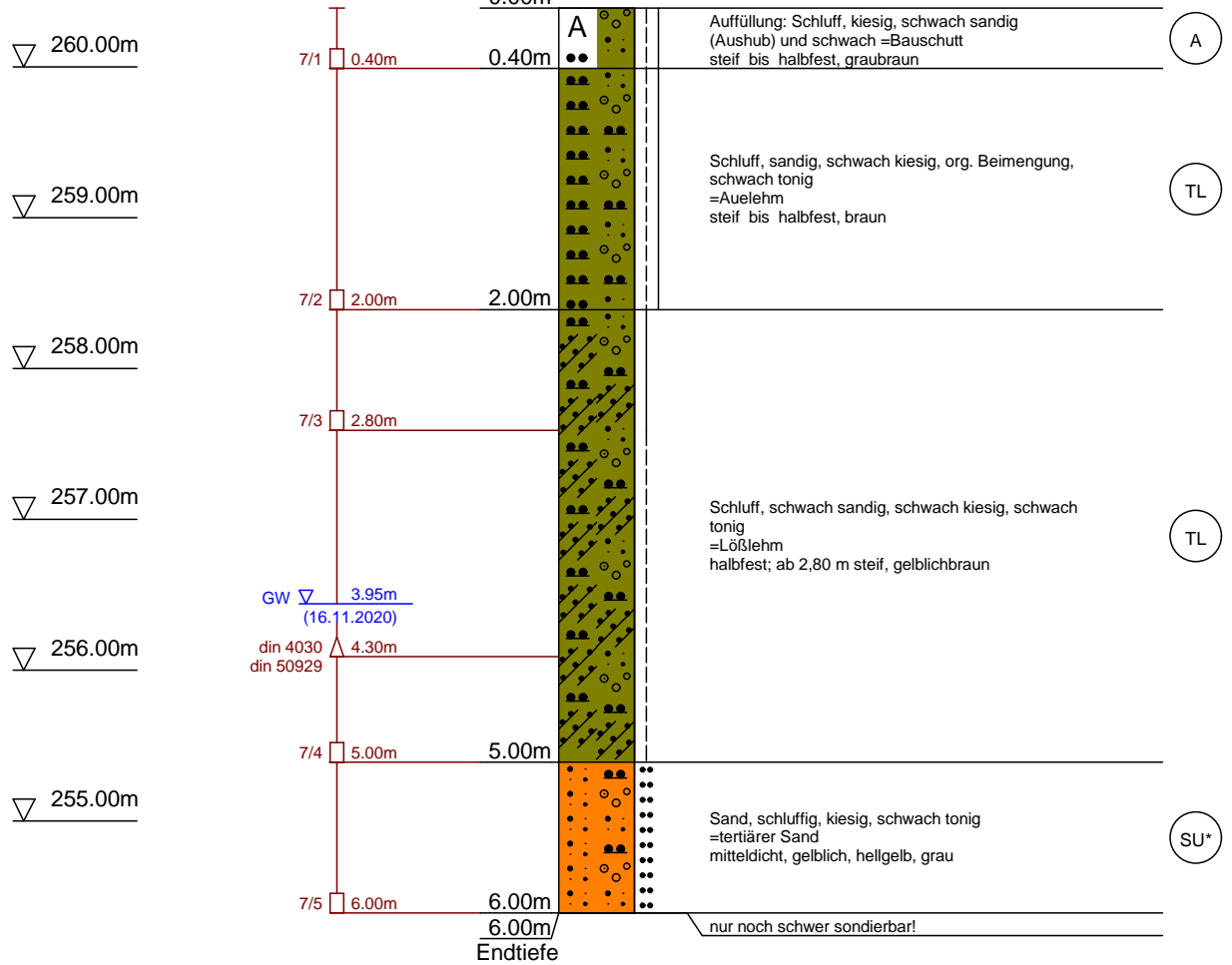
33321293.577

5634476.567

RKS 7

260.389 m DHHN 92

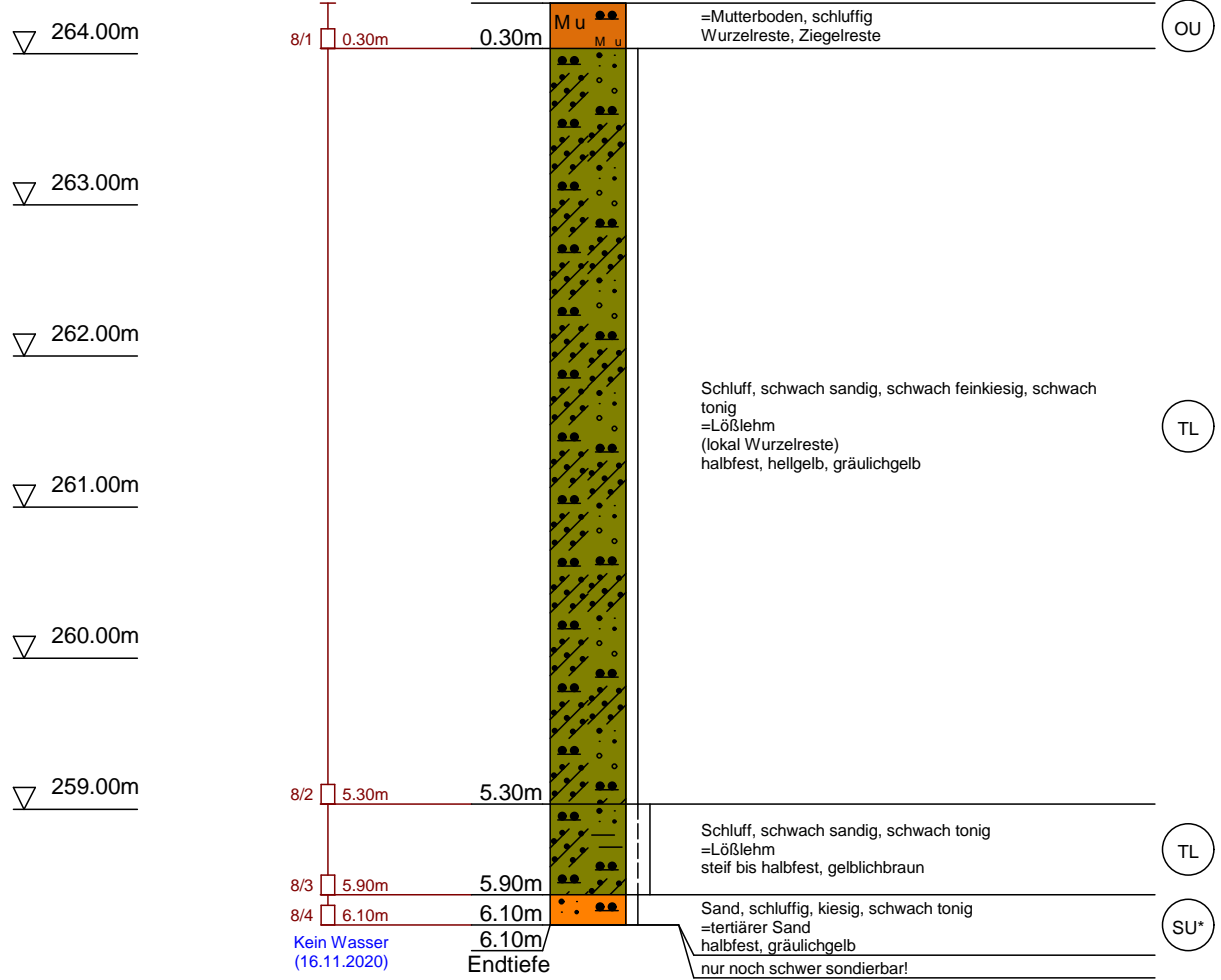
0.00m



RKS 8

264.333 m DHHN 92

0.00m



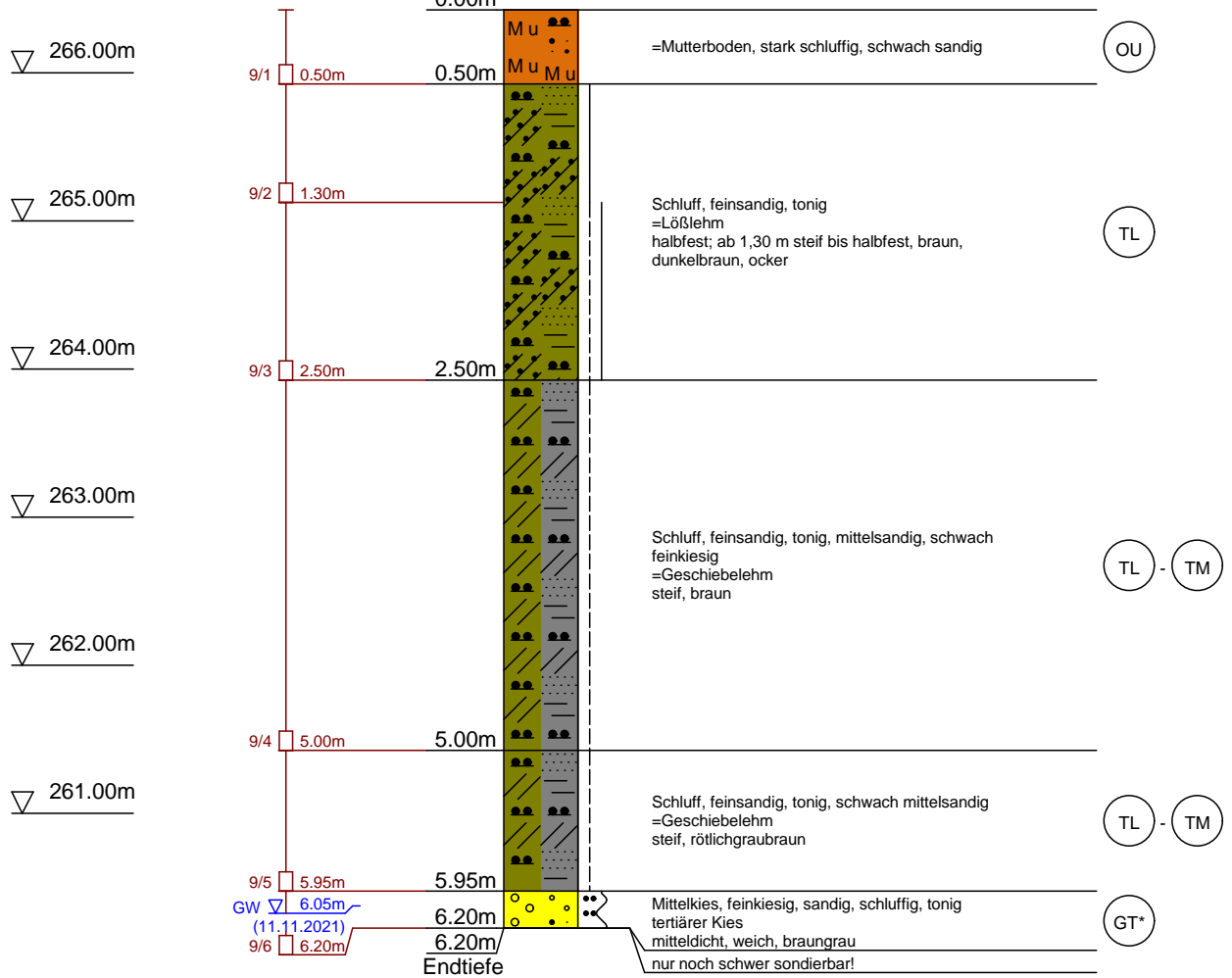
33321053.361

5634431.542

RKS 9

266.427 m DHHN 92

0.00m



33321059.722

5634404.088

RKS 10

268.844 m DHHN 92

0.00m

