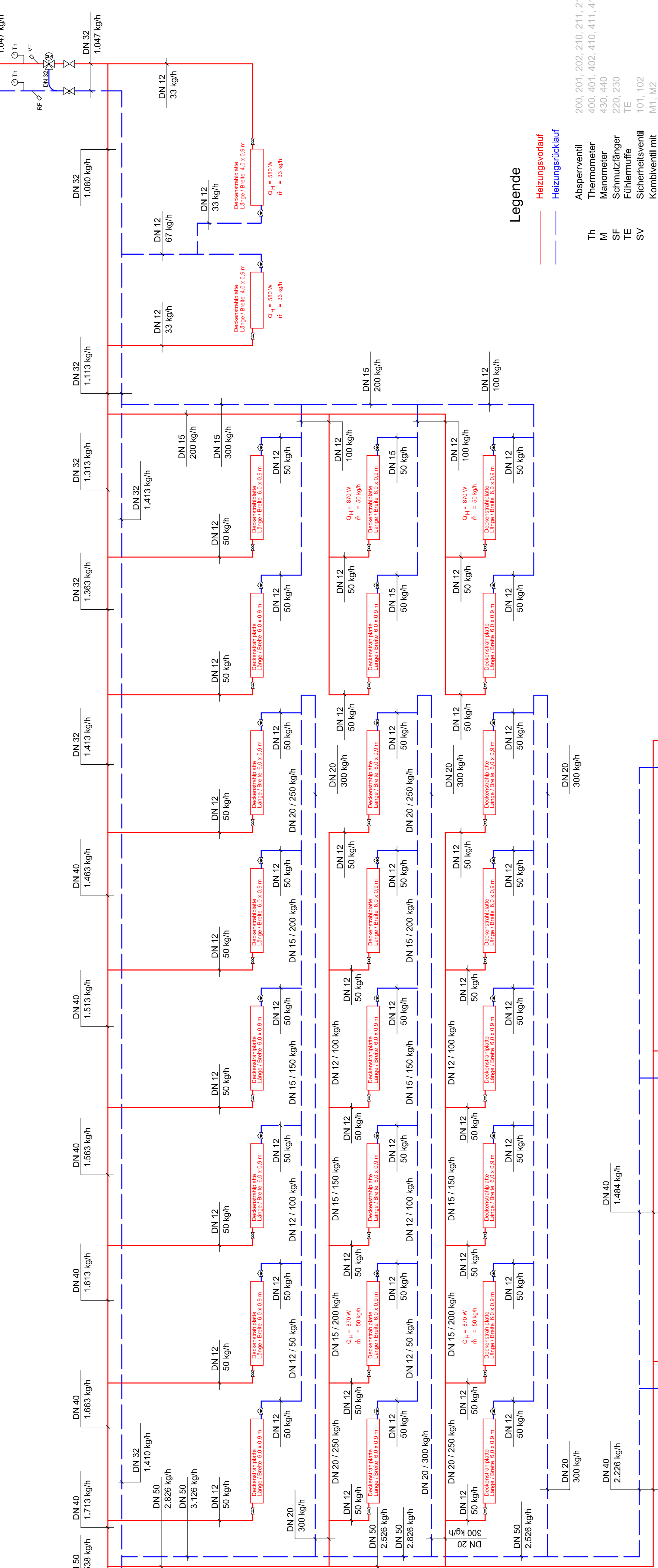
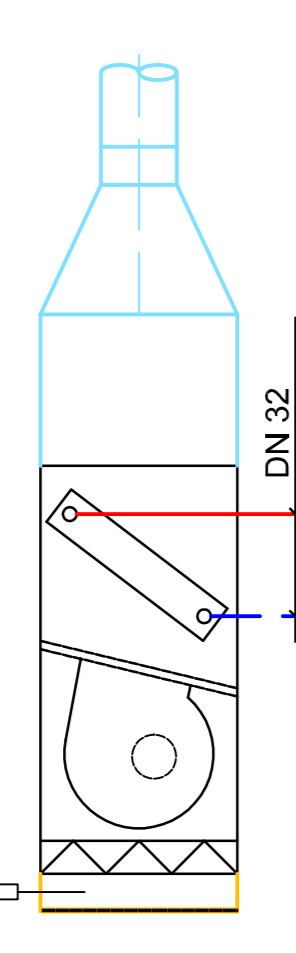
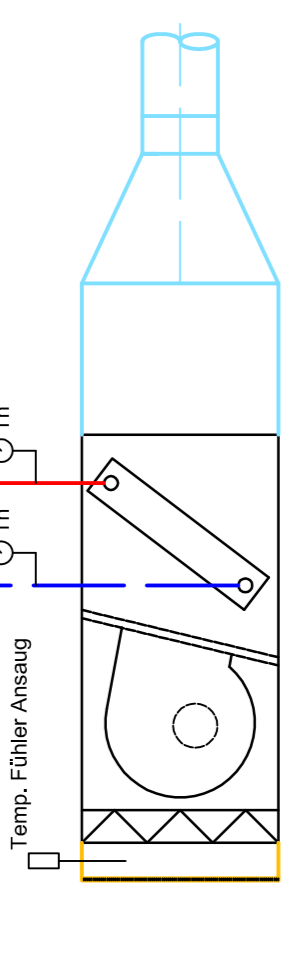


Bremsenprüfstand Achse 10 - 11

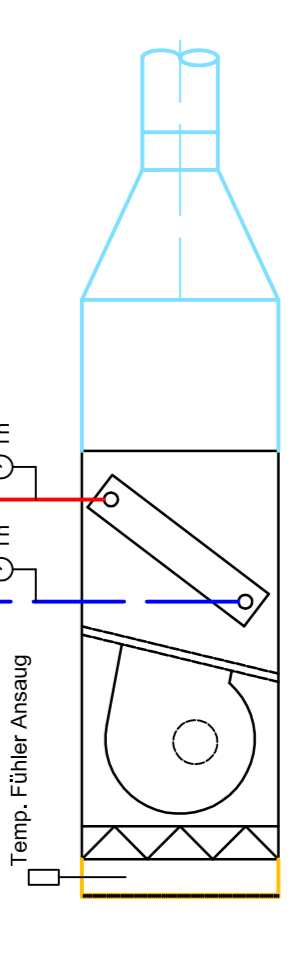
Innengerät
Achse 10-11
FWD 18 AT
Fabr. DAIKIN
Q_H = 18,23 kW



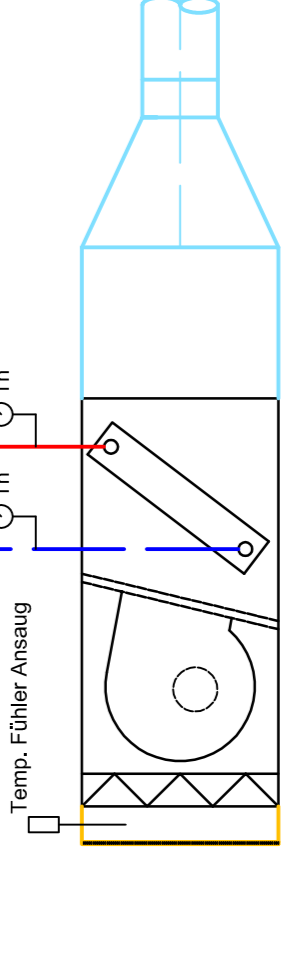
- Legende**
- Th Abgemessent
 - M Thermometer
 - SF Manometer
 - TE Schmutzfänger
 - TE Fühlermuffe
 - SV Sicherheitsventil
 - elek. Stellantrieb
 - EL Entlüftung
 - TE Rückläufer
 - TE Thermoventil
 - EV Entlüftung
 - VF Ventilschieber
 - RF Rückläufer
 - DK Kugelhahn
 - DK Regulierventil mit Einstellung



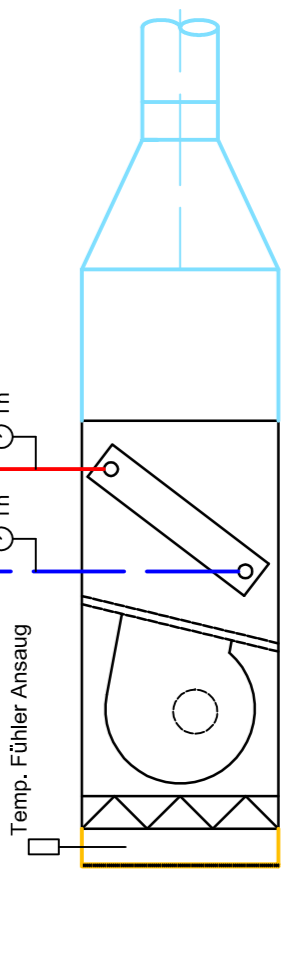
Werkstatt Achse 9 - 10
Innengerät
Achse 9-10
FWD 12 AT
Fabr. DAIKIN
Q_H = 13,02 kW



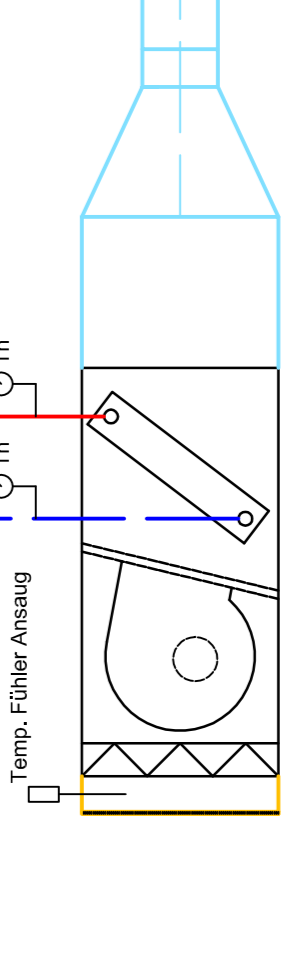
Werkstatt Achse 8 - 9
Innengerät
Achse 8-9
FWD 12 AT
Fabr. DAIKIN
Q_H = 13,02 kW



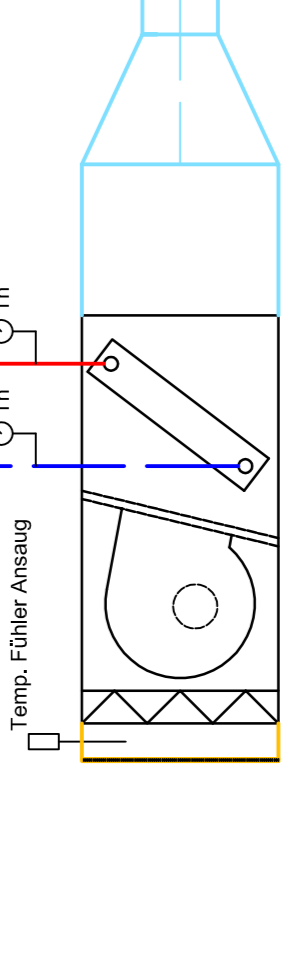
Werkstatt Achse 7 - 8
Innengerät
Achse 7-8
FWD 12 AT
Fabr. DAIKIN
Q_H = 13,02 kW



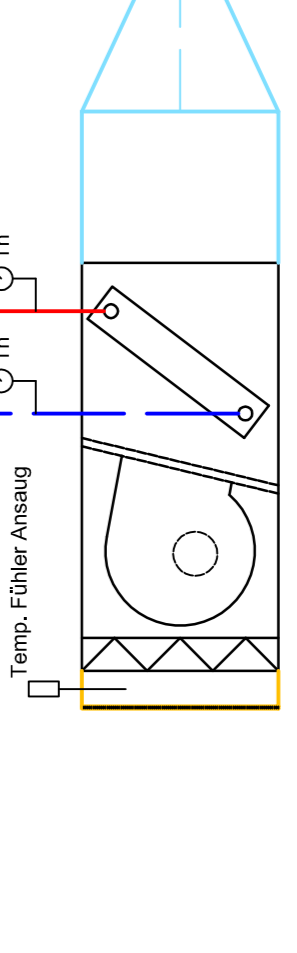
Werkstatt Achse 6 - 7
Innengerät
Achse 6-7
FWD 12 AT
Fabr. DAIKIN
Q_H = 13,02 kW



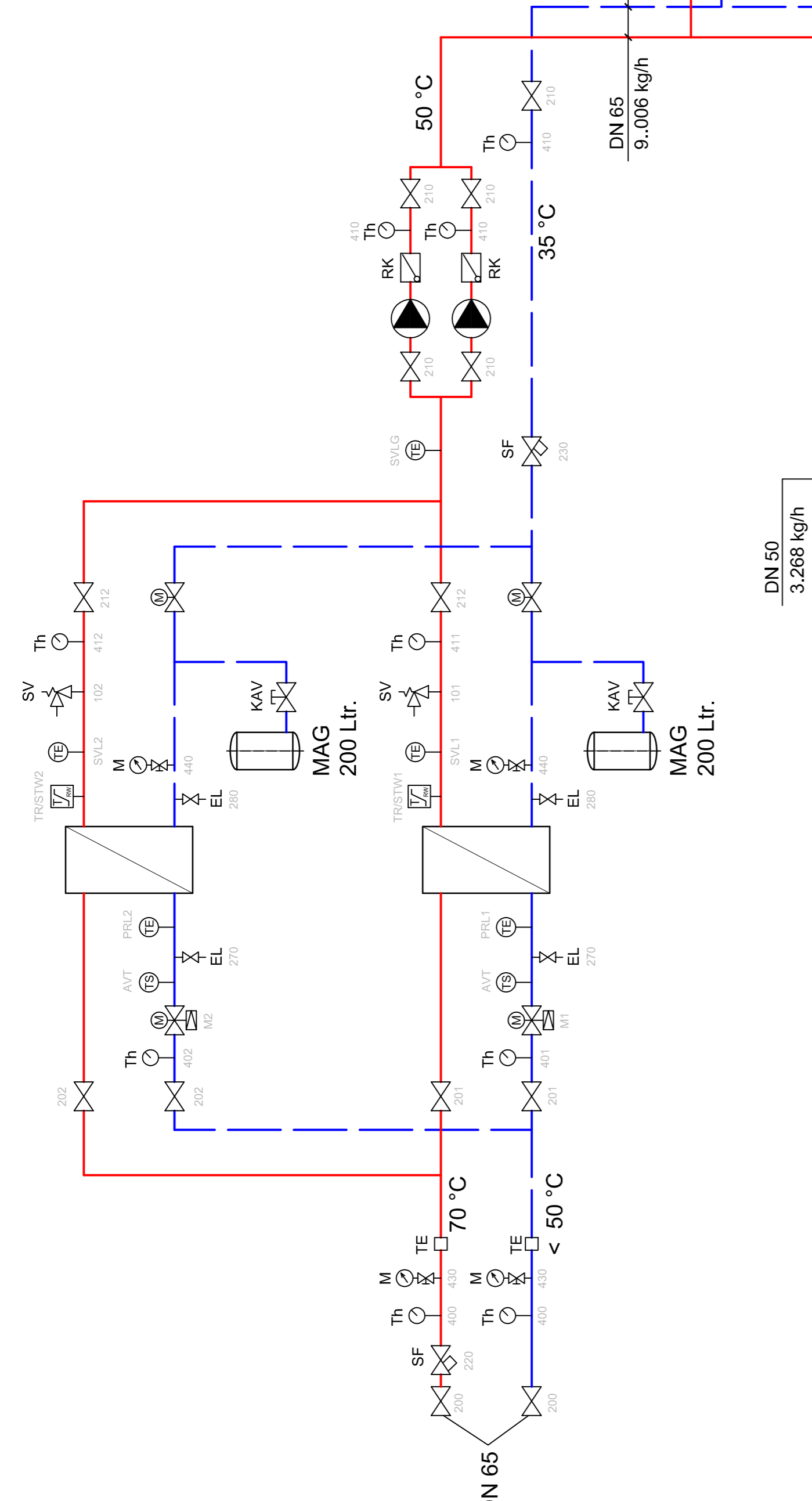
Werkstatt Achse 5 - 6
Innengerät
Achse 5-6
FWD 12 AT
Fabr. DAIKIN
Q_H = 13,02 kW



Werkstatt Achse 3 - 4
Innengerät
Achse 3-4
FWD 12 AT
Fabr. DAIKIN
Q_H = 13,02 kW



Blechbearbeitung Achse 2 -
Innengerät
Achse 2-3
FWD 12 AT
Fabr. DAIKIN
Q_H = 13,02 kW



C.	B.	A.	Abmessung	Datum	Name

IBH
Ingenieurbüro für Haustechnik GmbH
E-Mail: info@ibh-tga.de
E-Mail: info@ibh-tga.de
E-Mail: info@ibh-tga.de
E-Mail: info@ibh-tga.de

Proj.	0521-23-10
Objekt	Stadlerwerke Remscheid
Maßstab	1:1
Blatt	1
Blattanzahl	1
Blatttitel	Dachenthebung Buswerkstatt